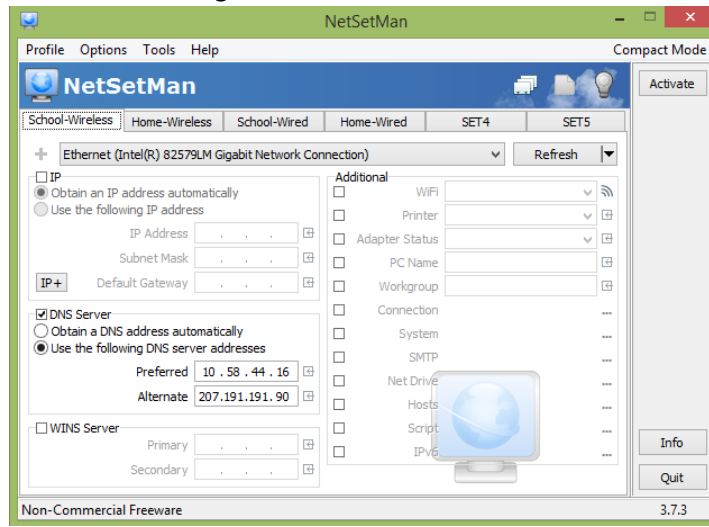
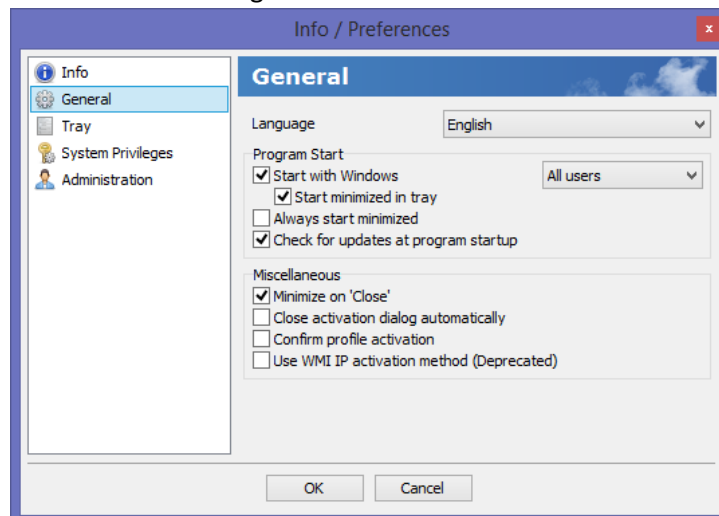


Instructions for Multiple Network Connections

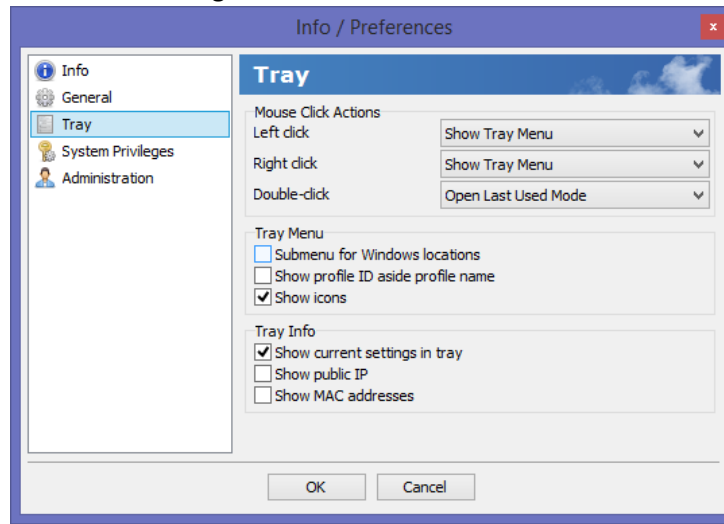
1. Install NetSetMan. The only change you will need to make on any screen is the Additional Tasks screen – Check the “Create a Quick Launch Icon”. Everything else you can yes, accept, continue, or next your way through. It should open up to a screen like the following:



2. Double Click or Right Click the first tab and rename to **School-Wireless**
3. Select **Wi-Fi(Intel Dual Band Wireless)** from drop-down
4. Set DNS Server to Use the following DNS Server addresses and enter **10.58.44.16** as Preferred and **207.191.191.90** as Alternate.
5. Double Click or Right Click the second tab and rename to **Home-Wireless**
6. Select **Wi-Fi(Intel Dual Band Wireless)** from drop-down
7. Set DNS Server to Obtain a DNS address automatically
8. Double Click or Right Click the third tab and rename to **School-Wired**
9. Select **Ethernet (Intel Ethernet Connection)** from drop-down
10. Set DNS Server to Use the following DNS Server addresses and enter **10.58.44.16** as Preferred and **207.191.191.90** as Alternate.
11. Double Click or Right Click the fourth tab and rename to **Home-Wired**
12. Select **Ethernet (Intel Ethernet Connection)** from drop-down
13. Set DNS Server to Obtain a DNS address automatically
14. Right Click SET4 and SET5 and uncheck “Show in Tray and Compact Mode”
15. Click on Options then Preferences
16. Change the General Tab to match the following:



17. Change the Tray tab to match the following:



18. Once set-up, the user will open the system tray and right click on the NetSetMan Icon



19. The user can then select which Network Connection they want to use.

